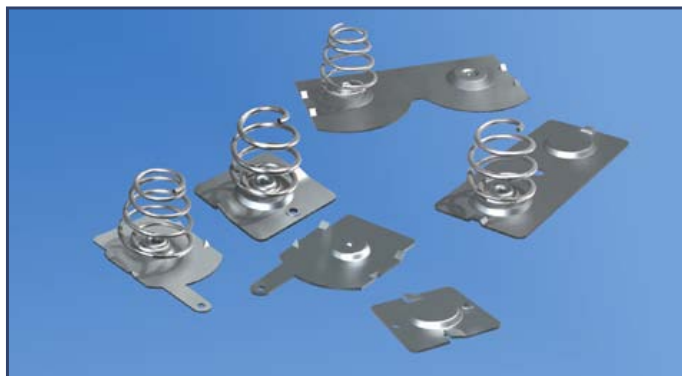


## SPRING & BUTTON CONTACTS

- Economical and reliable contacts are ideal for molded cases with self contained battery compartments
- "Solder tab" design for either wire lead or PC mounting
- Unique spring contacts adjust to variations in battery lengths
- Reliable spring contacts assure low contact resistance and a dependable connection
- Space saving, economical, excellent mechanical construction

### MATERIAL:

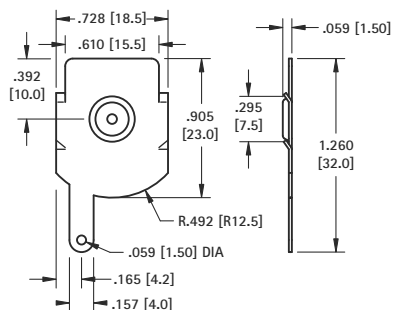
**Plate:** .020 (.51) Steel, Nickel Plate **Spring:** Spring Steel, Nickel Plate



Refer to page 35 for Battery Contact Layout & Mounting Details

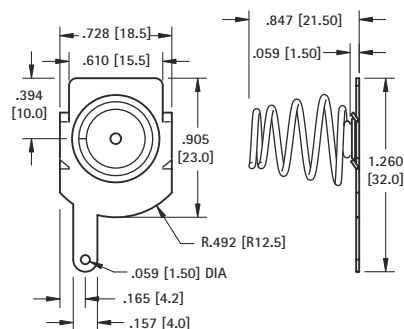


(+) POSITIVE BUTTON



"D" CELL

(-) NEGATIVE SPRING



DUAL CONTACT

Left  
Right

